

Fiber Optic Cable Assemblies



Features:

- Huner+Suhner connectors
- Manufactured at H+S on automated equipment of our own design and manufacture
- Meet and exceed all Telcordia GR-326 specification
- 100% Insertion and Return Loss testing
- Extensive interferometric testing
- 100% visual inspection at 400X

Huner+Suhner are world renowned as a leader in connector, cable and cable assembly manufacturing. Our cable assemblies are second to none. Produced on H+S automated polishing and assembly equipment, these assemblies are guaranteed, 100%, every time.

Singlemode performance is the proof of any cable assembly operations. Our typical specs are the lowest in the industry.

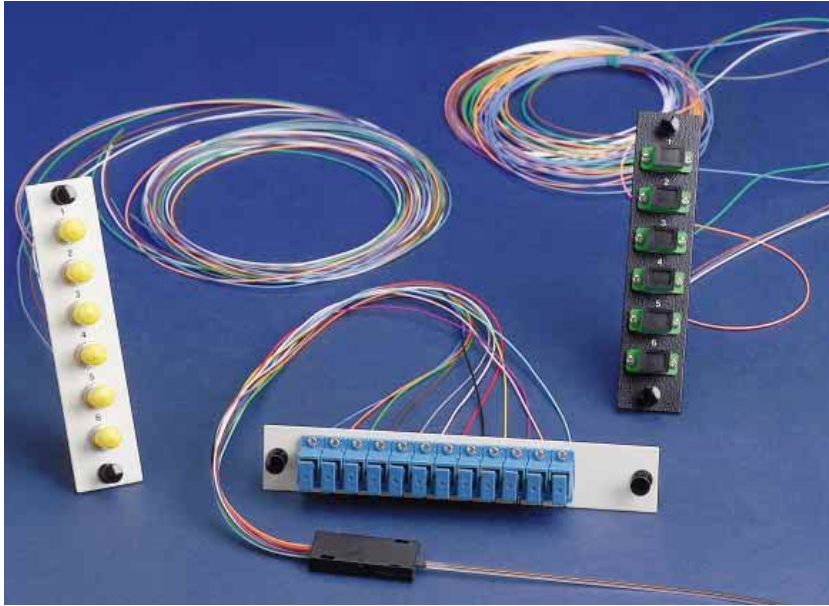
Insertion Loss, per mated pair, at 1300NM:	0.06dB
Max. insertion loss, (97%)	0.15dB
Return Loss, UPC	>50dB
Return Loss, APC	>85dB

We offer assemblies in ST, SC, LC, SC, FC, E2000, LX.5, SMA, DIN, MU and other configurations. We also have the FiberGate high-performance backplane connector for OEM applications.

Please call for information and a catalog of our assemblies and other passive optical components.

Accessories

Pigtail 6-Pack Assemblies



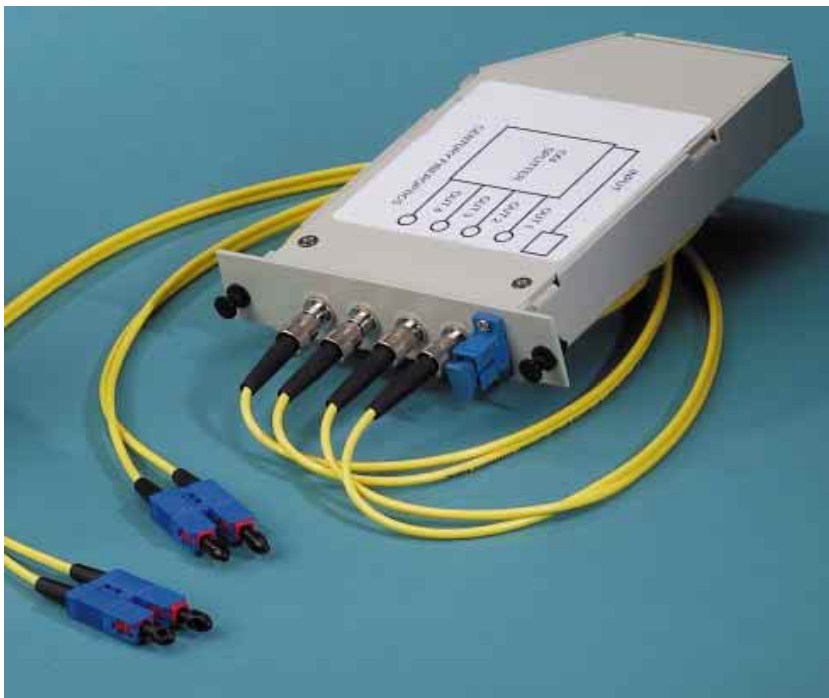
Century Fiber Optics 6-Pack pigtail assemblies are for use in our line of rack mount and wall mount cabinets and in any cabinet that utilizes the LGX 6-pack form factor. Available in all connector types, in six fiber and twelve fiber versions, they offer the best assurance of quality available. Each singlemode color-coded pigtail is factory terminated and tested through the adapter to ensure the performance of the entire system, not just the connector. Pigtails are three meters long for ease in splicing.

Many versions are available. Examples shown are:

- OFA-121-ST-3P (Six fiber ST panel)
- OFA-221-SC-3P (Twelve fiber SC simplex panel)
- OFA-121-SC-3P (Six fiber SC simplex panel)

All fiber cable assemblies meet or exceed Telcordia GR-326 requirements.

Splitters and Modules



Century Fiber Optics can provide component modules to meet your specific system requirements. These include splitters, WDMs, add/drop muxes, or other special devices. Our modules fit the standard "6-pack" format so they fit all of our modular wall mount and rack mount cabinets. Call us with your application to ensure the proper fit for your application.

Accessories Adapter panels

Features:

- Available in all connector types
- Fit all modular wall- and rack-mounted Century cabinets
- Powder coat finish in beige or optional black

Order panels with appropriate adapters to complete your interconnect cabinet installation. If you do not need the full capacity of your cabinet, order blanks to fill the unused slots. Also, you may order panels equipped with pigtails for splicing into your system (see page 15).

Custom panels are available. Please call with your special requirements.

PART#	DESCRIPTION
C10420	BLANK PANEL, BEIGE (B6)
BC1042	BLANK PANEL, BLACK (D5)
C10417	ST 6-PACK PANEL (UNLOADED) BEIGE (A5)
C10417 M6	ST 6-PACK (LOADED) W/ST SM/MM (A6)
C10417 S6	ST 6-PACK (LOADED) W/ ST SM
BC1041 -	ST 6-PACK PANEL (UNLOADED) BLACK (C6)
ESC1041 LM6	ST 6-PACK (LOADED) W/ ST SM/MM (C5)
BC1041 LS6	ST 6-PACK (LOADED) W/ ST SM
C11369	ST 8-PACK PANEL (UNLOADED) BEIGE
C11369 M8	ST 3-PACK (LOADED) W/ST SM/MM
C11369 S6	ST 8-PACK (LOADED) W/ ST SM
BC1136	ST 8-PACK PANEL (UNLOADED) BLACK (C2)
BC1136 LM8	ST 8-PACK (LOADED) W/ST SM/MM (C1)
BC1136 LS8	ST 8-PACK (LOADED) W/ST SM
C10418	FC 6-PACK PANEL (UNLOADED) BEIGE (A5)
C10418 S6	FC 6-PACK (LOADED) W/ FC SM (A4)
C10418 S6/APC	FC/APC 6-PACK (LOADED) W/ FC/APC SM
BC 10413	FC 6-PACK PANEL (UNLOADED) BLACK
BC 10413 LS6	FC 6-PACK (LOADED) W/FC SM
BC10413 LS6/APC	FC 6-PACK (LOADED) W/ FC/APC SM
C10419	SC 6-PACK PANEL (UNLOADED) BEIGE (A2)
C10419 M6	SC 6-PACK (LOADED) W/ SC SM/MM (A1)
C10419 S6	SC 6-PACK (LOADED) W/SCSM
C10419 S6/APC	SC 6-PACK (LOADED) S/ SC/APC SM (A3)
BC1041	SC 6-PACK PANEL (UNLOADED) BLACK (D1)
BC1041 LM6	SC 6-PACK (LOADED) W/ SC SM/MM (D2)
BC1041 LS6	SC 6-PACK (LOADED) W/SCSM
BC1041 LS6/APC	SC 6-PACK (LOADED) W/ SC/APC SM
C10793	SC DUPLEX 6-PACK PANEL (UNLOADED) BEIGE (B5)
C10793 M6	SC DUPLEX 6-PACK (LOADED) W/SCD SM/MM (B4)
C10793S6	SC DUPLEX 6-PACK (LOADED) W/SCD SM
C10793LS6/APC	SC DUPLEX 9-PACK (LOADED) W/SCD/APC SM
BC10793	SC DUPLEX 6-PACK PANEL (UNLOADED) BLACK (C8)
BC10793LM6	SC DUPLEX 6-PACK (LOADED) W/SCD SM/MM (C7)
BC10793LS6	SC DUPLEX 6-PACK (LOADED) W/SCDSM
BC10793LS6/APC	SC DUPLEX 6-PACK (LOADED) W/SCDAPC
C10823	SC DUPLEX 12-PACK PANEL (LOADED) BEIGE (B2)
C10823LM12	SC DUPLEX 12-PACK (LOADED) W/SCD SM/MM (B3)
C10823LS12	SC DUPLEX 12-PACK (LOADED) W/SCD SM
C10823LS6/APC	SC DUPLEX (LOADED) W/SCD APC SM (B1)
BC10823	SC DUPLEX PANEL (UNLOADED) BLACK (C4)
BC10823LM12	SC DUPLEX (LOADED) W/SCD SM/MM (C3)
BC10823LS12	SC DUPLEX (LOADED) W/SCD SM
BC10823LS12/APC	SC DUPLEX (LOADED) W/SCD APC SM
C11014	LCDUPLEX PANEL (UNLOADED) BEIGE (D8)
C11014LM12	LC DUPLEX (LOADED) W/LCD SM/MM (D7)
C11014LS12	LC DUPLEX (LOADED) W/LCD SM
BC11014	LC DUPLEX PANEL (UNLOADED) BLACK (D4)
BC11014LM6	LC DUPLEX (LOADED) W/LCD SM/MM (D3)
BC11014LS6	LC DUPLEX (LOADED) W/LCD SM

SM/MM : ADAPTERS W/PHOS BRONZE SLEEVE
 SM: ADAPTERS W/ZIRCONIA SLEEVE





Models:

- | | |
|--------------|------------------------------|
| Splice Trays | |
| • OST-101F | 7" Fusion Splice Tray |
| • OST 101M | 7" Mechanical Splice Tray |
| • OST-103F | 8.75" Fusion Splice Tray |
| • OST-103M | 8.75" Mechanical Splice Tray |
| • OST-102F | 10" Fusion Splice Tray |
| • OST -102M | 10" Mechanical Splice Tray |

- | | |
|----------------|--------------------------|
| Splice Holders | |
| • C10099 | UltraSplice Holder |
| • C10100 | Fusion Splice Holder |
| • C10101 | Mechanical Splice Holder |

Features:

- Fusion and Mechanical trays
- Holders for fusion, mechanical and UltraSplice sleeves
- Each tray holds 12 or 24 fibers
- Use in any H+S splice cabinet
- Available in four sizes
- Easy access snap cover
- Anodized aluminum
- Complete with ties for incoming tubes

Century Fiber Optic Splice Trays secure, organize and store spliced fibers. The 7" and 8.75" trays hold up to 12 fusion or mechanically spliced fibers, and the 10" tray holds up to 24 fibers. The 5" width of the trays ensures adequate bend radius at all wavelengths. All trays come with cable ties to secure the buffer tubes to the tray.